

Visions & Voices: Mojada: A Medea in Los Angeles: Home

A resource for this theatrical production at the Getty Villa

Home

Visions & Voices: "Mojada: A Medea in Los Angeles"



Mojada: A Medea in Los Angeles

Thursdays–Saturdays, Sept. 10–Oct. 3, 2015 | [The Getty Villa](#)

A new adaptation by Luis Alfaro

Based on Euripides's *Medea*

Directed by Jessica Kubzansky

Produced by The Theatre @ Boston Court

From MacArthur Fellow and critically acclaimed author of *Electricidad* and *Oedipus el Rey*, Luis Alfaro's *Mojada* is a breathtaking reimagining of Euripides's *Medea* transported to East Los Angeles. In an epic journey of border crossings, Medea, a seamstress with extraordinary skill, runs from a past of betrayals. With husband Hason and their son in tow, our storied heroine's struggle to adapt takes a disastrous turn when old and new worlds meet in the City of Angels. Alfaro's gripping contemporary take on the ancient Greek myth tackles the complexities of family, tradition, culture, and the explosive

moment when they all collide. Tickets \$36–45.

SOURCE: http://www.getty.edu/museum/programs/performances/outdoor_theater_15.html

Media Coverage

Click the citation below for an article from the **Los Angeles Times** on "Mojada" at the Getty:

Boehm, M. (2015, September 4). Luis Alfaro's 'Mojada' draws on Greek tragedy, Mexican American immigration. *Los Angeles Times*.

USC Libraries Collections Strategist



John Juricek

[Email Me](#)

Contact:

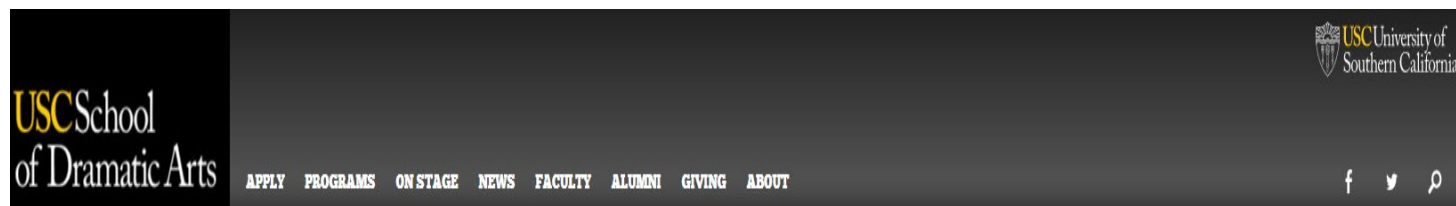
Grand Library CAL 212
3434 South Grand Avenue
Los Angeles, CA 90089
(213) 740-2931
juricek@usc.edu

Subjects:

History, Library & Information Science

About Luis Alfaro

About Luis Alfaro



Luis Alfaro

Assistant Professor

Luis Alfaro is an Assistant Professor at the USC School of Dramatic Arts. He is a Chicano writer/performer known for his work in poetry, theatre, short stories, performance and journalism. He is the first-ever resident playwright of the Oregon Shakespeare Festival, courtesy of an Andrew W. Mellon Foundation grant. Alfaro is also a producer/director who spent 10 years at the Mark Taper Forum as Associate Producer, Director of New Play Development and co-director of the Latino Theatre Initiative.

He was born and raised in the Pico/Union district of downtown Los Angeles, blocks from the USC campus. Alfaro is the recipient of a John D. and Catherine T. MacArthur Foundation fellowship, popularly known as a "genius grant," awarded to people who have demonstrated expertise and exceptional creativity in their respective fields. He was a Joyce Foundation Fellow and received awards from the The Wallace Alexander Gerbode Foundation and The William & Flora Hewlett Foundation, as well The Rockefeller Foundation MAP Fund. He is the only artist to have won two awards in the same year from The Kennedy Center's Fund for New American Plays. He is also the recipient of awards from the National Endowment of the Arts, Theatre Communications Group and PEN USA, among others. He is featured in over 25 anthologies, has an award-winning spoken word CD, and PBS short film, *Chicanismo*. He is a member of New Dramatists, an associate artist at Playwrights Arena and Cornerstone Theatre Company in Los Angeles.

His plays and performances have been seen throughout the U.S., Canada, England, France and Romania. They include *Bruja* (Magic Theatre in San Francisco), *Oedipus El Rey* (Victory Gardens in Chicago, Magic Theatre, Boston Court, Woolly Mammoth in Washington, D.C. and is the winner of the Glickman Prize for best play of the 2010 season in San Francisco, as well as Best Adaptation from the L.A. Weekly Theatre Awards), *Electricidad* (Mark Taper Forum, Goodman Theatre in Chicago, Borderlands Theatre in Tucson), *Breakfast, Lunch & Dinner* (Oregon Shakespeare Festival, Hartford Stage in Conn.) *Black Butterfly* (Mark Taper Forum, Kennedy Center & Smithsonian Museum), *Straight as a Line* (Primary Stages Off-Broadway, Romanian National Theatre, Goodman Theatre in Chicago). His solo performances have been seen at the Institute of Contemporary Art in London, The Getty Center, Boston Center for the Arts, The Goodman Theatre, Hirshorn Museum at the Smithsonian, South Coast Repertory, Oregon Shakespeare Festival and X-Teresa Performance Space in Mexico City, among others. His most recent one-man show, *St. Jude*, world premiered as part of DouglasPlus at Center Theatre Group's Kirk Douglas Theatre and was presented as a part of South Coast Repertory's Studio SCR series.



SOURCE: <http://dramaticarts.usc.edu/luis-alfaro/>

Other works by Luis Alfaro



Body of Faith by Luis Alfaro

Call Number: Doheny PS3601 .L36 B63 2007

ISBN: 9781583423578

Publication Date: 2007-07-01

About "Medea"

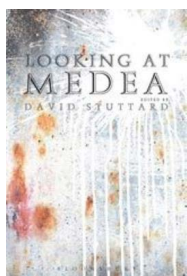
About the Play

Medea, Greek Mēdeia, tragedy by **Euripides**, performed in 431 BCE. One of Euripides' most powerful and best-known plays, *Medea* is a remarkable study of injustice and ruthless revenge.

In Euripides' retelling of the legend, the Colchian princess Medea has married the hero Jason. They have lived happily for some years at Corinth and have produced two sons. As the play's action begins, Jason has decided to cast off Medea and to marry the daughter of Creon, king of Corinth. After a dreadful struggle between her passionate sense of injury and her love for her children, Medea determines that she will punish Jason by murdering not only her own sons but also the Corinthian princess, leaving Jason to grow old with neither wife nor child. She carries out the murders and escapes in the chariot of her grandfather, the sun-god Helios. Despite the monstrosity of Medea's deeds, Euripides succeeds in evoking sympathy for her.

Source: "Medea." *Encyclopaedia Britannica*. *Britannica Academic*. Encyclopædia Britannica Inc., 2015. Web. 26 Aug. 2015. <<http://academic.eb.com/EBchecked/topic/372093/Medea>>.

These library books can provide more information on the original "Medea" by Euripides



Looking at Medea by David Stuttard (Editor)

Call Number: Doheny PA3978 .L65 2014

Publication Date: 2014

Euripides' *Medea* is one of the most often read, studied and performed of all Greek tragedies. A searingly cruel story of a woman's brutal revenge on a husband who has rejected her for a younger and richer bride, it is unusual among Greek dramas for its acute portrayal of female psychology.

Medea can appear at once timeless and strikingly modern. Yet, the play is very much a product of the political and social world of fifth century Athens and an understanding of its original context, as well as a consideration of the responses of later ages, is crucial to appreciating this work and its legacy. This collection of essays by leading academics addresses these issues, exploring key themes such as revenge, character, mythology, the end of the play, the chorus and Medea's role as a witch. Other essays look at the play's context, religious connotations, stagecraft and reception. The essays are accompanied by David Stuttard's English translation of the play, which is performer-friendly, accessible yet accurate and closely faithful to the original. [Descriptive content provided by Syndetics^a, a Bowker service.]



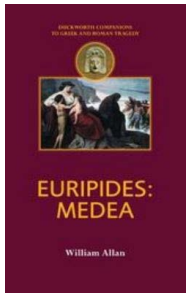
Medea by Ben Power; Euripides

Call Number: Doheny PR6116.O953 M43 2014

Publication Date: 2014

Medea is a wife and a mother. For the sake of her husband, Jason, she's left her home and borne two sons in exile. But when he abandons his family for a new life, Medea faces banishment and separation from her children. Cornered, she begs for one day's grace. It's time enough. She exacts an appalling revenge and destroys everything she holds dear. Ben Power's version of Euripides'

tragedy Medea premiered at the National Theatre, London, in July 2014. [Descriptive content provided by Syndetics^a, a Bowker service]



Euripides by William Allan

Call Number: Doheny PA3973.M43 A55 2002

Publication Date: 2002

Euripides' "Medea" is one of the greatest and most influential Greek tragedies. This book outlines the development of the Medea myth before Euripides and explores his uniquely powerful version from various angles. There are chapters on the play's relationship to the gender politics of fifth-century Athens, Medea's status as a barbarian, and the complex moral and emotional impact of her revenge.

Particular attention is paid to the tragic effect of Medea's great monologue and the significance of her role as a divine avenger. The book ends by considering the varied and fascinating reception of Euripides' play from antiquity to the present day. [Descriptive content provided by Syndetics^a, a Bowker service.]

TO FIND MORE LIBRARY BOOKS....

To search the USC Libraries catalog for more books on Euripides' Medea, click on this link: [MEDEA](#)

About the Getty Villa

General Information

The Getty Villa is located at

17985 Pacific Coast Highway

Pacific Palisades, California 90272

(310) 440-7300

[Hours, Directions, and Parking](#)

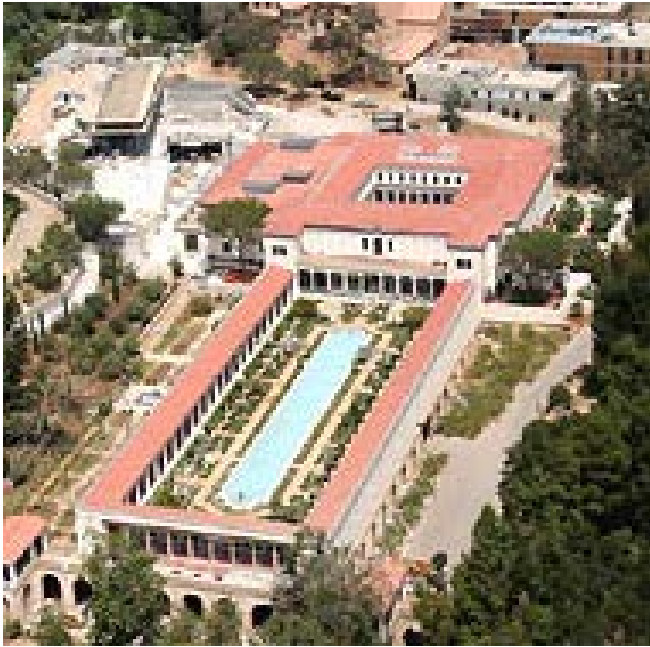
Introduction

The Getty Villa, the original site of the J. Paul Getty Museum, is a museum dedicated to the study of the arts and cultures of ancient Greece, Rome, and Etruria. The design is based on the Villa dei Papiri, a 1st century Roman estate in Herculaneum, Italy, which was partially excavated in the 18th century. It is the only museum in the U.S. dedicated exclusively to ancient art. It underwent a major renovation project and reopened in 2006.

Visit the **TimeScope Room**, containing interactive exhibits that focus on time, place, and artistic style in the ancient Mediterranean, and the [Family Forum](#) for some hands-on activities.

Performances and films are available (student rate tickets), as well as free lectures (tickets required).

Bird's Eye View

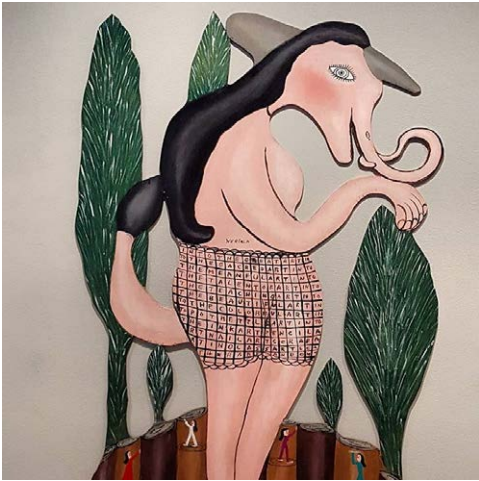


Subject Guide



Stacy Williams

[Email Me](#)

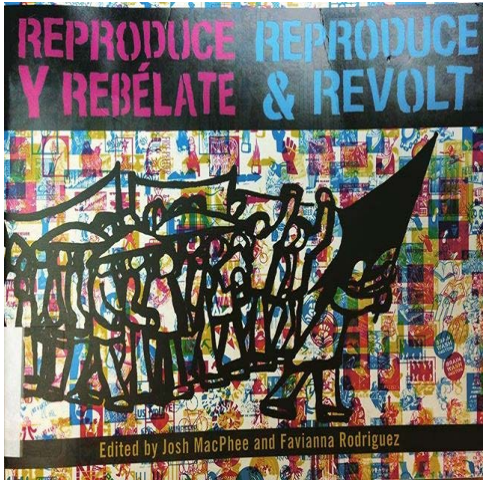
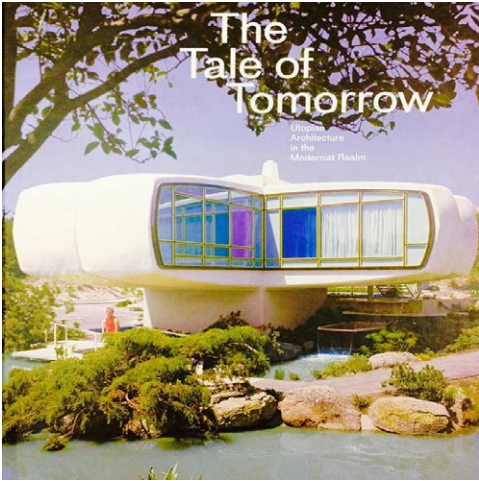


Contact:

Helen Topping
Architecture & Fine Arts Library
Watt Hall
USC

Architect: Walter Förderer
Location: Herémence, Switzerland

St. Nicolas Church



Subjects:

Architecture, Art & Design, History

About This Guide

This guide was originally created for **Visions and Voices**.

- Browse upcoming Visions and Voices events
- Explore USC Libraries Visions and Voices research guides

Last Updated: Dec 19, 2016 6:30 PM

URL: <http://libguides.usc.edu/mojada>

[Print Page](#)

[Login to LibApps](#)

Subjects: **Performing Arts, Visions & Voices** **Tags:** **visions_voices**